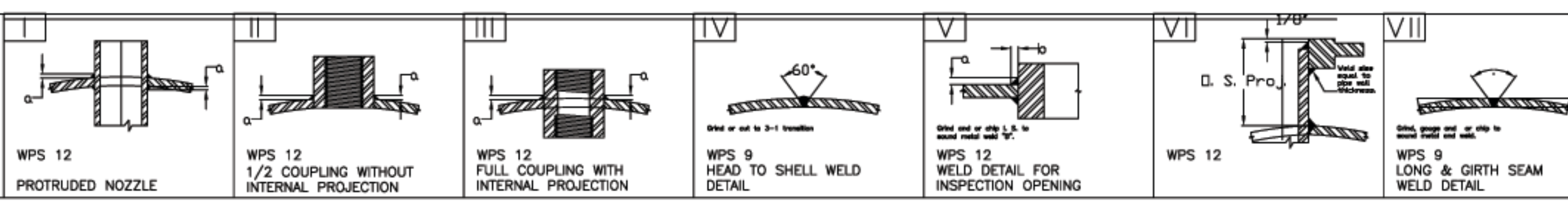


**SHOP NOTES**

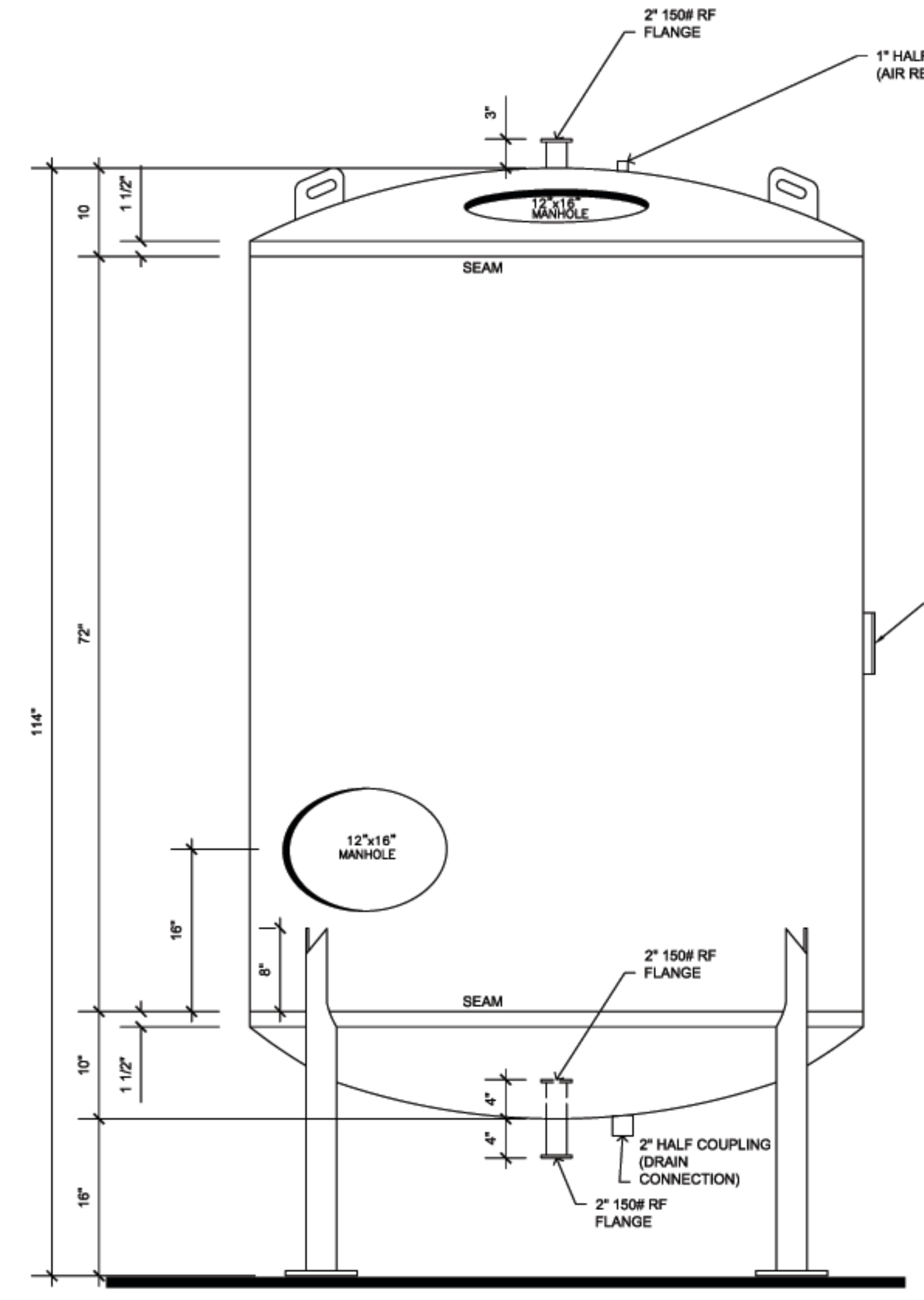
1. Drill and Tap 1/4" dia. Teltail hole in reinforcing pads.
2. Flange bolt holes to straddle principal centerlines of vessel.
3. Inside edges of Nozzle Necks shall be rounded.

The radius of roundness 1/8" min. or one half the wall thickness if the pipe is less than 1/4".

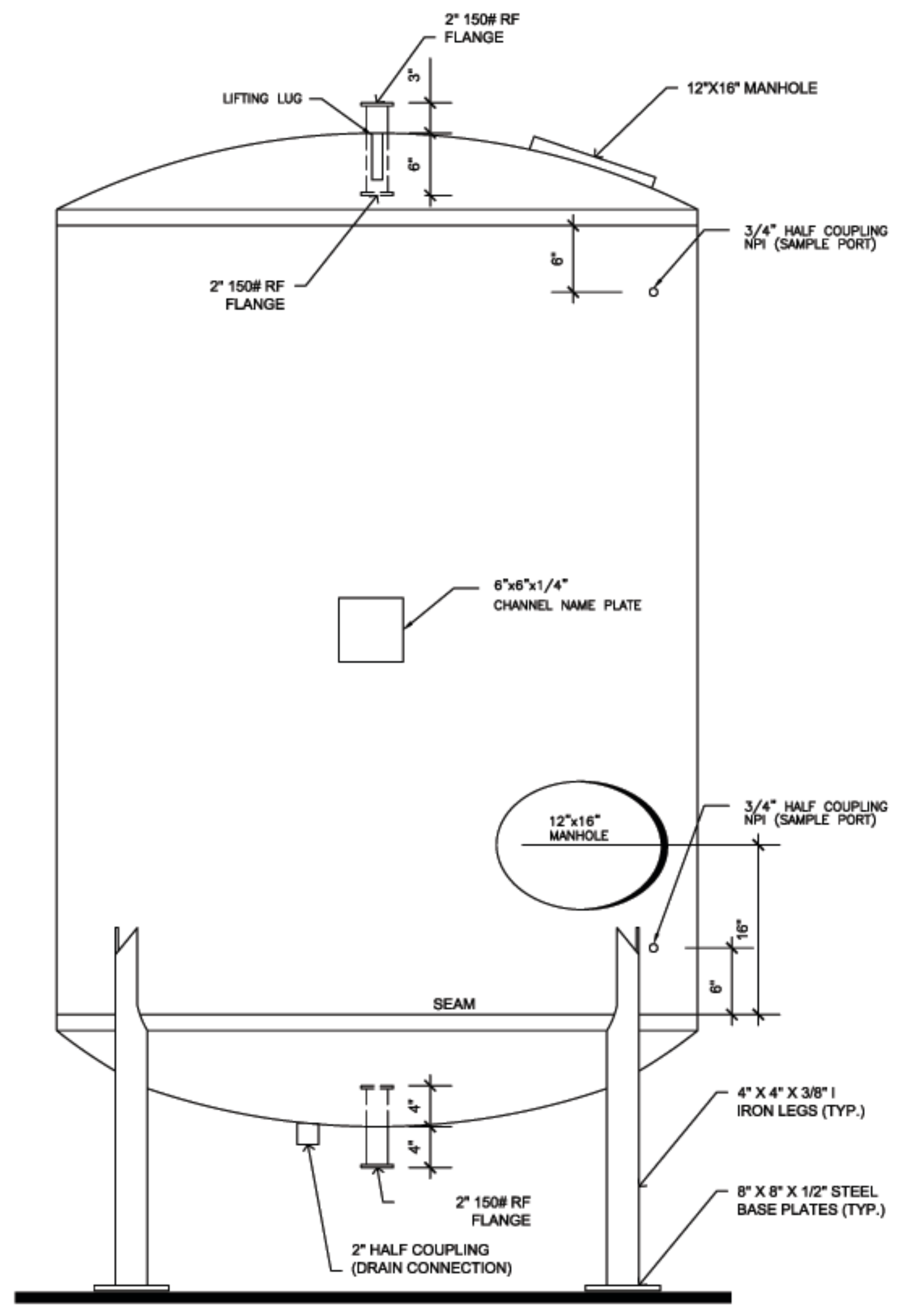


PRINTED RECORD			
ISSUED FOR	TO	DATE	REV

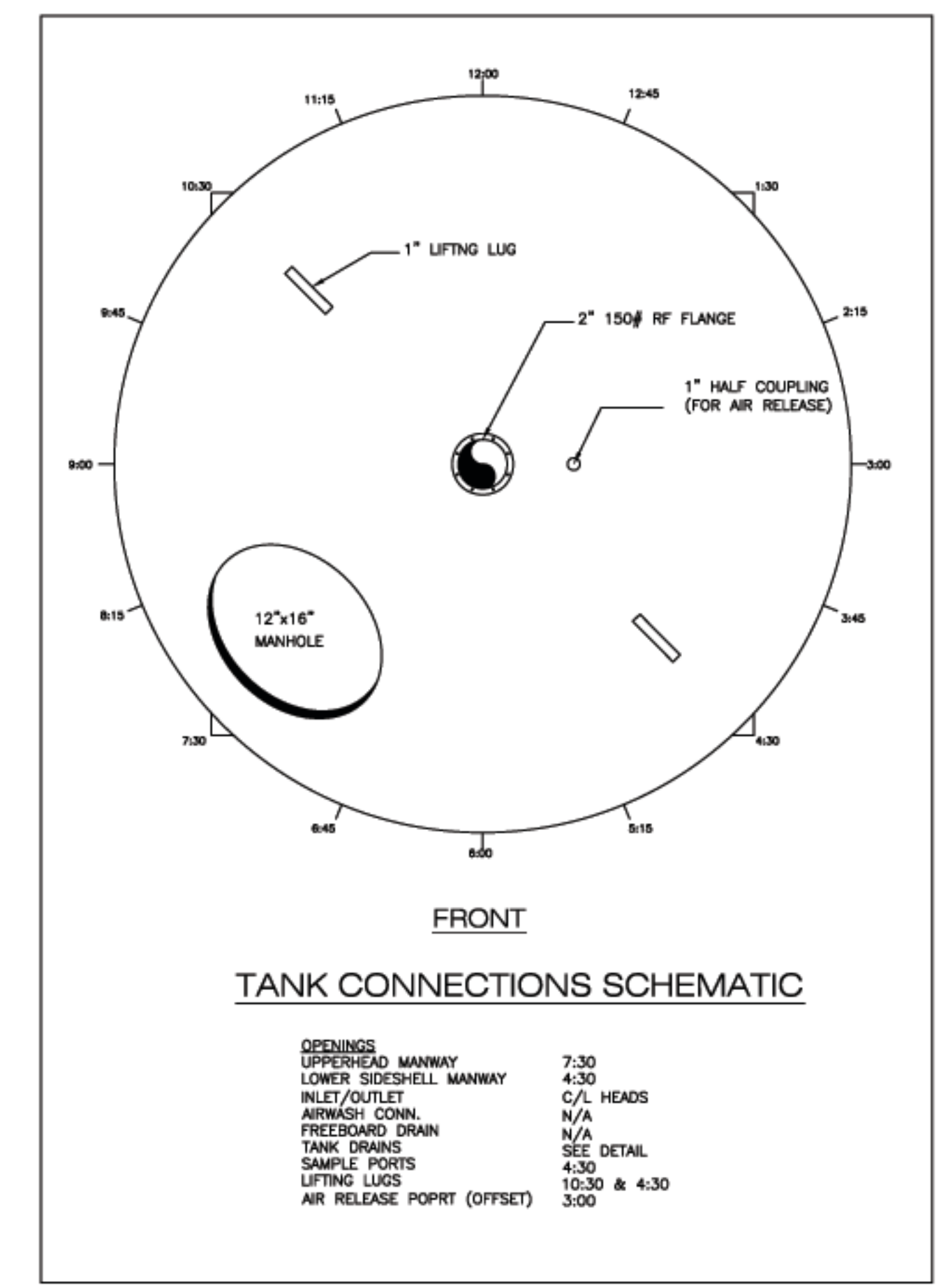
NOTES			
<b>A: UNDERDRAIN</b>			
SCH. 80 PVC			
2" PVC HEADER			
2" PVC 90 degree ELBOWS (TURN INTO HEADS)			
<b>B: INTERIOR LINING</b>			
12 MIL DFT TNEMEC SERIES 141			
<b>C: EXTERIOR LINING</b>			
7 MIL DFT TNEMEC SERIES 161			
SAFETY BLUE			
HUB: PVC <input checked="" type="checkbox"/> 316ss <input type="checkbox"/>			
LATERALS: PVC <input checked="" type="checkbox"/> 316ss <input type="checkbox"/>			
DIA:			
QTY:			
SLOT:			
SAMPLE PORTS - 2			
SIZE: - 3/4" NPT - 6" FROM SEAMS			
SLOT:			
MATERIAL:			
<b>MANHOLE</b>			
SIZE: 12"x16" CLARK KENNEDY			
LOCATION TOP: UPPER HEAD			
BOT: 16" ABOVE BTM. SEAM			
<b>FREEBOARD DRAIN:</b>			
SIZE:			
LOCATION:			
ELEVATION:			
<b>GRAVEL SUPPORT:</b>			
QUARTZ SIZE:			
CU. FT. QTY.:			
<b>FILTER MEDIA:</b>			



TANK - SIDE VIEW  
SCALE: 1"=1'-0"

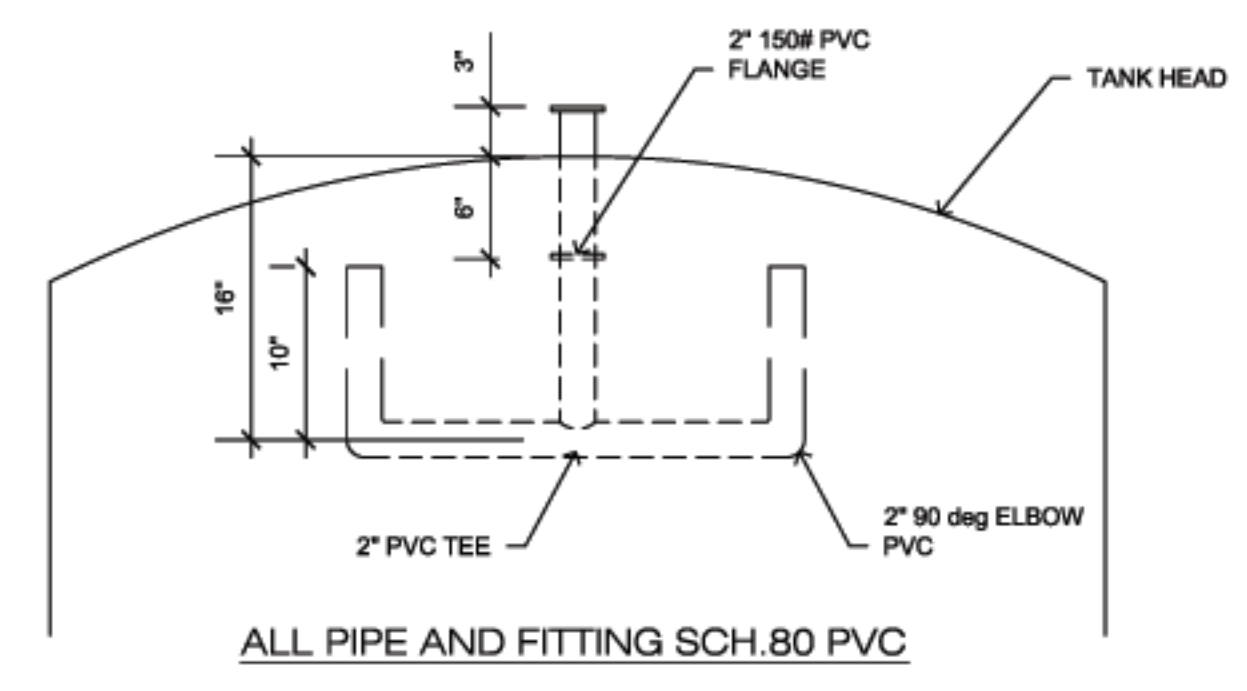


TANK - FRONT VIEW  
SCALE: 1"=1'-0"

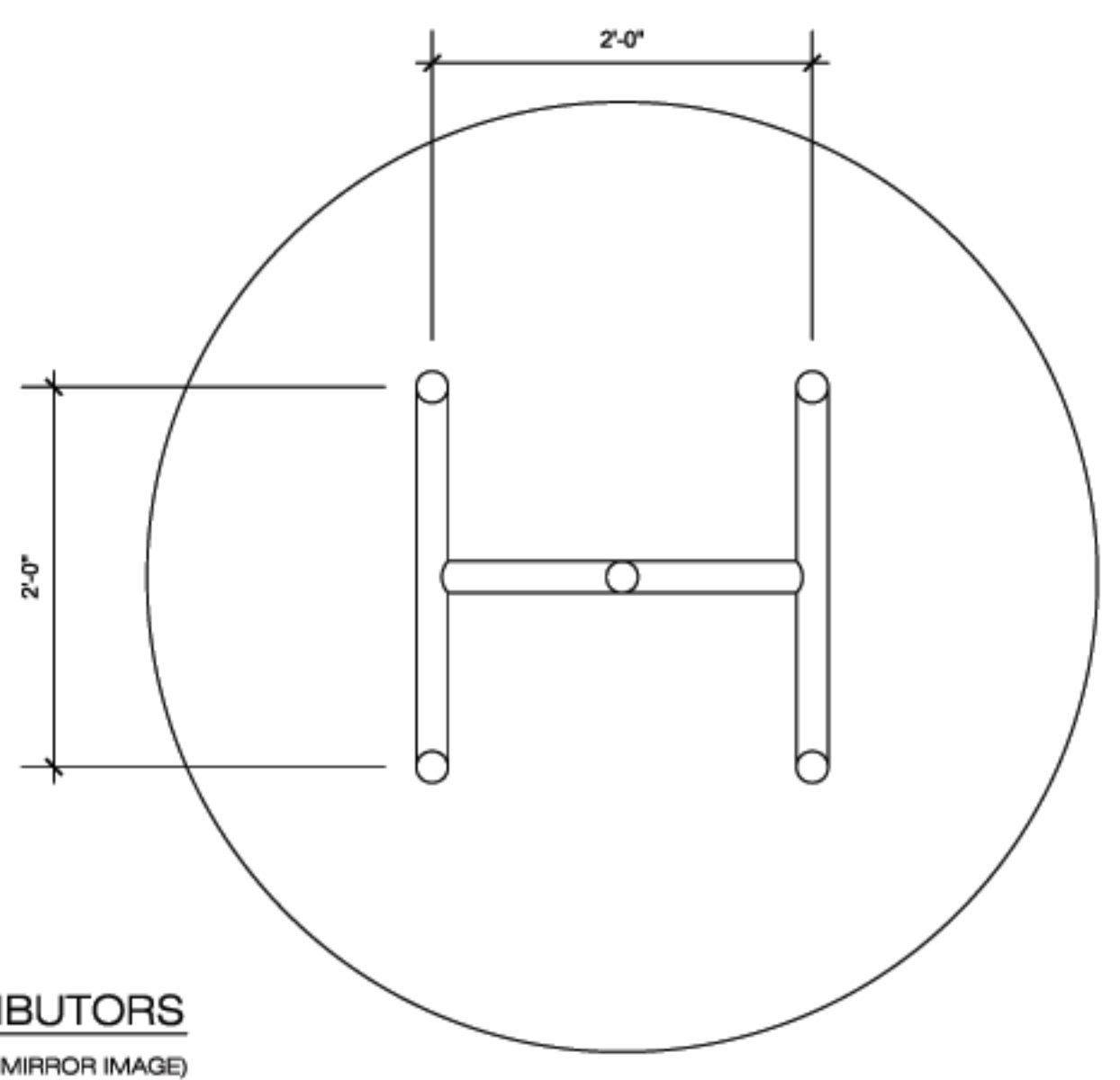


FRONT  
TANK CONNECTIONS SCHEMATIC

OPENINGS	
UPPERHEAD MANWAY	7:30
LOWER SIDESHELL MANWAY	4:30
INLET/OUTLET MANWAY	C/L HEADS
AIRWASH CONN.	N/A
FREEBOARD DRAIN	N/A
TANK DRAINS	SEE DETAIL
SAMPLE PORTS	4:30
LIFTING LUGS	10:30 & 4:30
AIR RELEASE POPRT (OFFSET)	3:00



REACTION TANK DISTRIBUTORS  
UPPER & LOWER (LOWER IS MIRROR IMAGE)  
SCALE: 1"=1'-0"



GENERAL NOTES			
DESIGN	●	DESIGN CODE - ASME SECTION VIII DIVISION 1 1998 EDITION - 1999 AMMENDMENT	
	●	DESIGN OR M.A.W.P. (Hot and Corroded)	150 p.s.i. AT 300 °F
	●	OPERATING PRESSURE	100 p.s.i. AT °F
	●	M.A.W.P. (Hot and corroded) LIMITED BY	
	●	RADIOGRAPHY	N/A JOINT EFFICIENCY N/A %
	●	POST WELD HEAT TREATMENT	ADDITIONAL CODES
	●	CORROSION ALLOWANCE	in.
	●	HYDRO TEST (Based on M.A.W.P. New and Cold)	150 p.s.i.
	●	INSULATION THICKNESS	in.
	●	SERVICE COLD WATER CAPACITY	76.0 ft. <sup>3</sup>
SPECIFICATION	●	WEIGHTS: Dry	2400 lbs., Operating lbs., Testing lbs.
	●	OVERALL LENGTH	in., OVERALL HEIGHT 11.4 in.
	●	SHELL	0.375 min. THICKNESS 0.375 in.
MATERIAL	●	HEADS	0.500 NOM. TYPE FLANGED DISH
	●	INLET HEAD MIN. THICKNESS AFTER FORMING NEW	0.4375 in.
CONSTRUCTION	●	OUTLET HEAD MIN. THICKNESS AFTER FORMING NEW	0.4375 in.
	●	FLANGE	1 PIPE SCH. 40
	●	WELD FITTING	150# ANSI TUBES
	●	NON PRESSURE	COUPLING 300#
	●	WELDOLET	THREDOLET 3000#
	●	STUD BOLTS	NEXT NUTS
	●	GASKETS	RED RUBBER PAINT SEE NOTES ABOVE
	●	INSULATION	
	●	REGISTERED IN THE PROVINCE/S	
	●	W.P.S. EMPLOYED	
●	C.R.N. NUMBER	M.F.G. SERIAL NO. N.D.	
●	REFERENCE C.R.N. NUMBER FOR REGISTERING		

OPENINGS	
A	INLET 2.0" 150# FLGD. TOP HEAD C
B	OUTLET SIDE SHELL BOTTOM SHELL: 2" 150# FLGD. BTM. HEAD C
C	VENT 1" 150# 1PT
D	DRAIN 2" 150# 1PT

CONSULTING ENGINEER ASSOCIATED ENGINEERING (CALGARY)

DRAWING TITLE

PETER LOUGHEED  
PROVINCIAL PARK  
KANANASKIS COUNTRY  
60" DIAM. CHLORINE  
CONTACT TANKS (4)

**West Coast Filters Inc.**  
British Columbia, Canada.

Toll Free North America  
1-800-375-7744  
www.westcoastfilters.com

DRAWN	DESIGN	CHECKED
I.D.R.	R.D.	R.D.
SCALE	DATE	APPROVED
AS NOTED	25 OCT. 2005	R.D.

CUSTOMER NO. MDL NO. 582261      DRAWING NO. 05-10-25 106-A      REV.