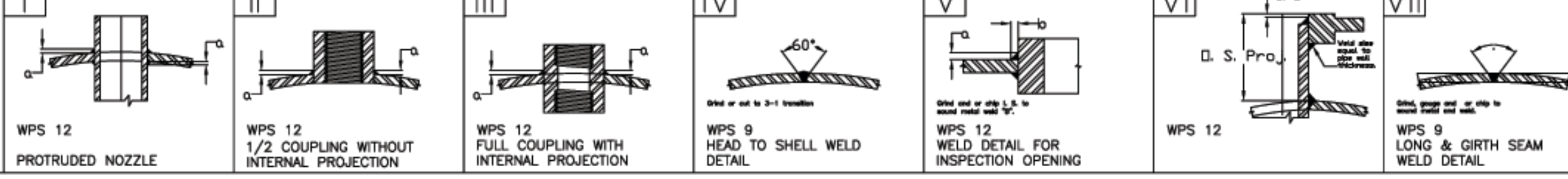
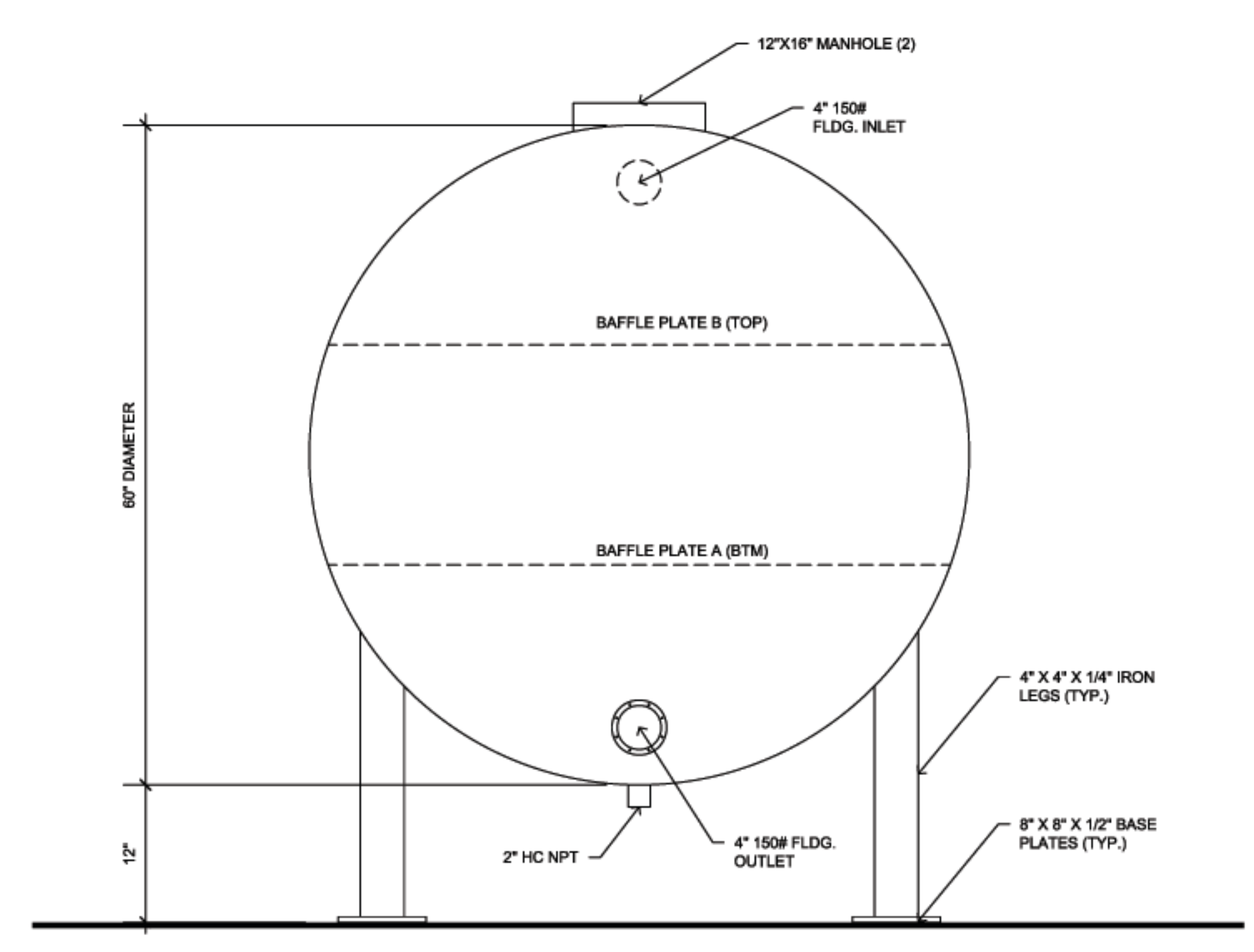
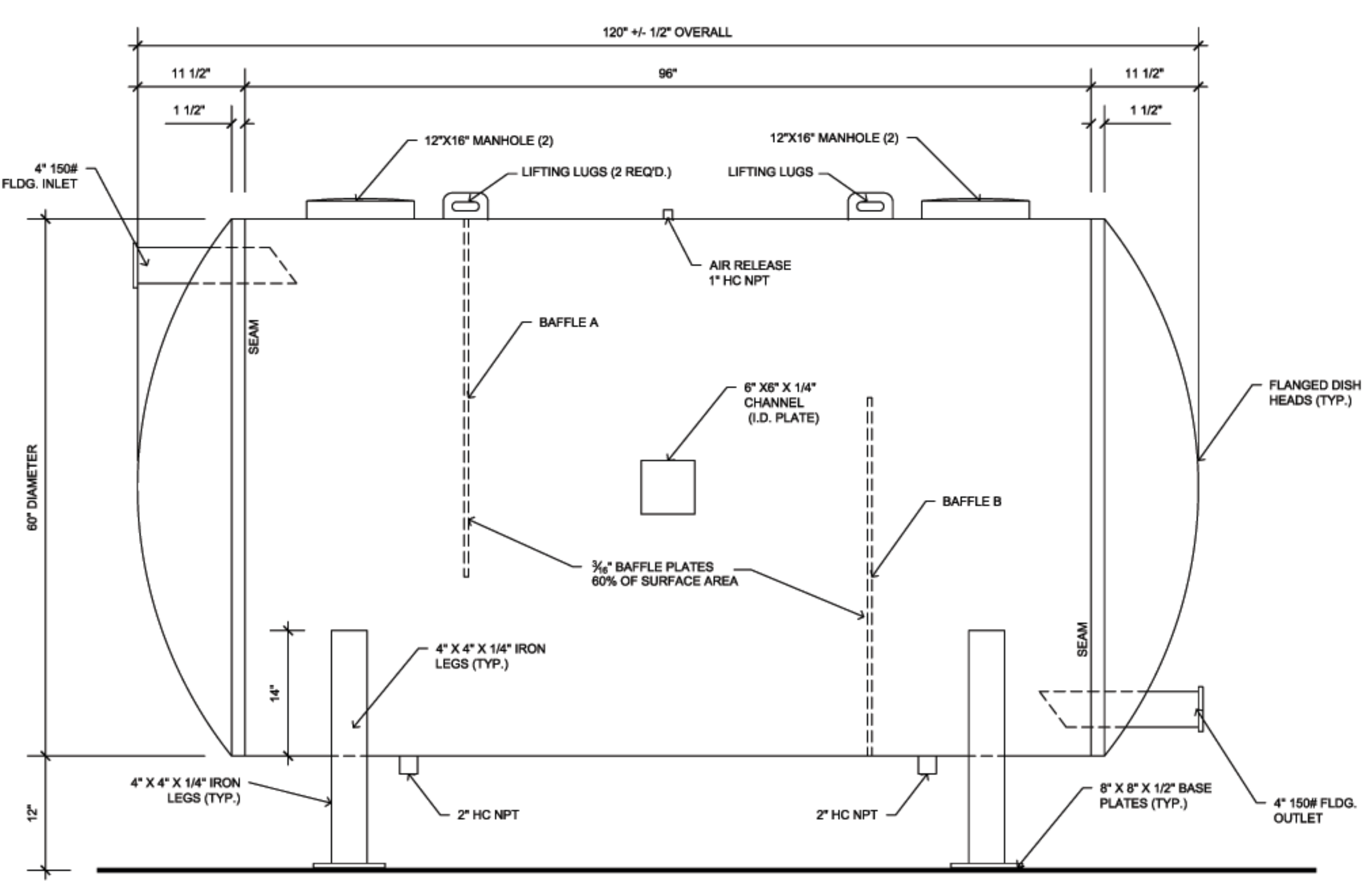


**SHOP NOTES**  
 1. Drill and Tap 1/4" dia. Teltail hole in reinforcing pads.  
 2. Flange bolt holes to straddle principal centerlines of vessel.  
 3. Inside edges of Nozzle Necks shall be rounded.  
 The radius of roundness 1/8" min. or one half the wall thickness if the pipe is less than 1/4".

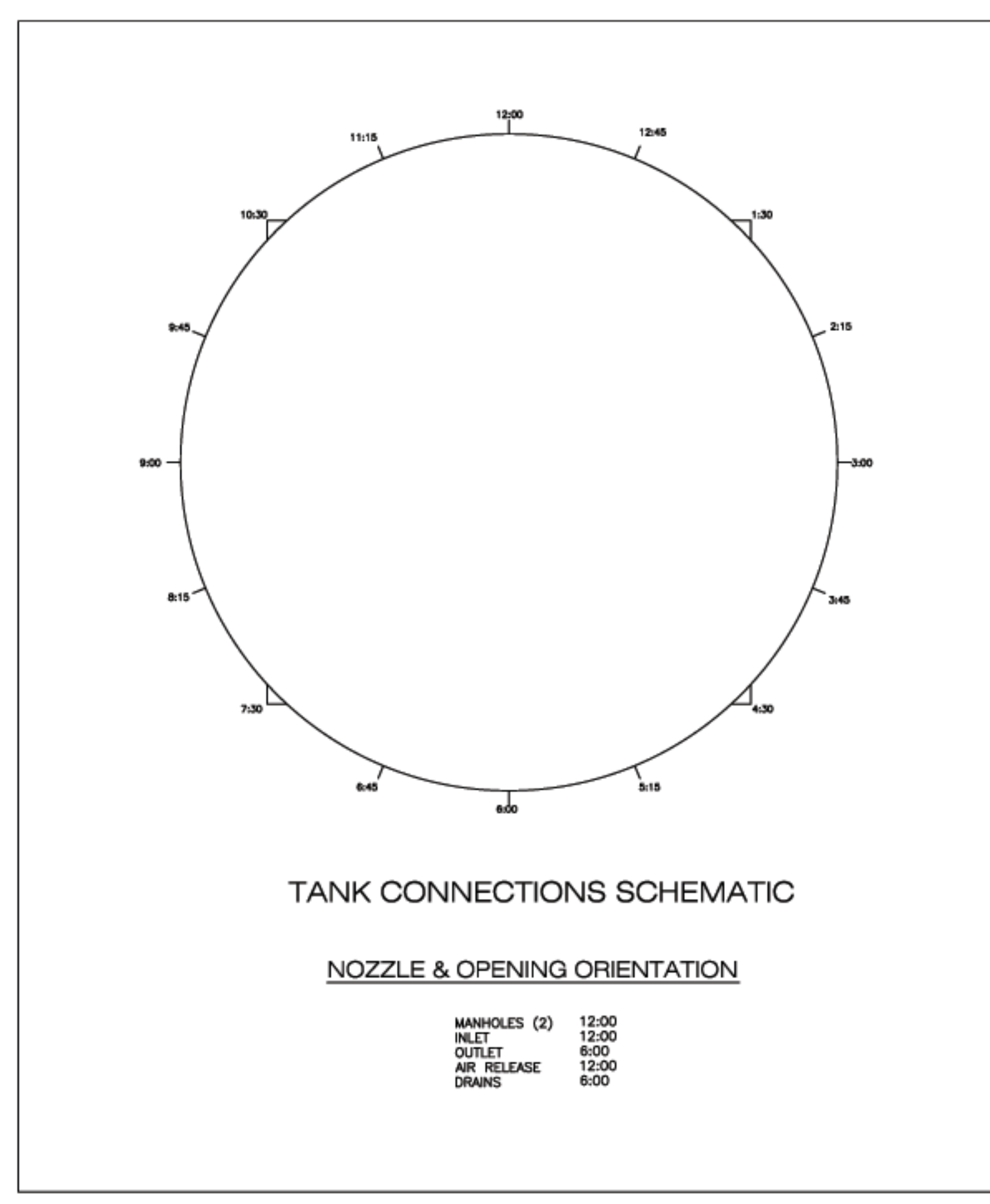


PRINTED RECORD			
ISSUED FOR	TO	DATE	REV

**NOTES**  
 A: TANK VOLUME 189 CU. FT. C/W HEADS  
 B: BAFFLE PLATES 60% OF VESSEL SURFACE AREA  
 -12 SQ.FT. EACH  
 C: FLOW RATE NOT TO EXCEED 50 G.P.M.  
 D: INTERIOR LINING  
 -SANDBLAST TO SSP 10  
 12-14 MILS CARBOLINE #891  
 EXTERIOR - 7ML DFT CARBOLINE #893



**FILTER TANK - SIDE VIEW**  
 SCALE 1"=1'-0"



**TANK CONNECTIONS SCHEMATIC**

**NOZZLE & OPENING ORIENTATION**

MANHOLES (2) 12:00  
 INLET 12:00  
 OUTLET 6:00  
 AIR RELEASE 12:00  
 DRAINS 6:00

HUB	PVC <input type="checkbox"/>	316ss <input type="checkbox"/>
LATERALS	PVC <input type="checkbox"/>	316ss <input type="checkbox"/>
DIA		
QTY		
SLOT		
<b>SAMPLE PORTS</b>		
SIZE		
SLOT		
MATERIAL		
<b>MANHOLE</b>		
SIZE	12"x16" CLARK KENNEDY	
LOCATION	TOP UPPER SHELL - 2 REQD.	
	BOT	
<b>FREEBOARD DRAIN</b> N.A.		
SIZE		
LOCATION		
ELEVATION		
<b>GRAVEL SUPPORT</b>		
QUARTZ SIZE		
CU. FT. QTY.		
<b>FILTER MEDIA</b>		

GENERAL NOTES			
DESIGN	DESIGN CODE - ASME SECTION VIII DIVISION 1 1998 EDITION - 1999 AMMENDMENT		
	DESIGN OR M.A.W.P. (Hot and Corroded)	100 p.s.i.	AT 'F'
SPECIFICATION	OPERATING PRESSURE	100 p.s.i.	AT 'F'
	M.A.W.P. (Hot and Corroded) LIMITED BY		
MATERIAL	RADIOGRAPHY	N/A	JOINT EFFICIENCY N/A %
	POST WELD HEAT TREATMENT	ADDITIONAL CODES	
CONSTRUCTION	CORROSION ALLOWANCE	in.	
	HYDRO TEST (Based on M.A.W.P. New and Cold)	150 p.s.i.	
MATERIAL	INSULATION THICKNESS	in.	
	SERVICE COLD WATER CAPACITY	189.0	ft. <sup>3</sup>
CONSTRUCTION	WEIGHTS: Dry	2500	lbs., Operating lbs., Testing lbs.
	OVERALL LENGTH	120"	OVERALL HEIGHT 22 in.
MATERIAL	SHELL	0.250	min. THICKNESS 0.250 in.
	HEADS	0.3125	TYPE FLANGED DISH
CONSTRUCTION	INLET HEAD MIN. THICKNESS AFTER FORMING NEW	0.250	in.
	OUTLET HEAD MIN. THICKNESS AFTER FORMING NEW	0.250	in.
MATERIAL	FLANGE	1	PIPE SCH. 40
	WELD FITTING	150# ANSI	TUBES
CONSTRUCTION	NON PRESSURE	COUPLING	300#
	WELDOLET	THREDOLET	3000#
MATERIAL	STUD BOLTS	NEXT NUTS	
	GASKETS	RED RUBBER	PAINT EXT. - PRIME CARBOLINE #893
CONSTRUCTION	INSULATION	FINISH - MARINE GRADE ENAMEL	
	REGISTERED IN THE PROVINCE/S		
MATERIAL	W.P.S. EMPLOYED		
	C.R.N. NUMBER	M.F.G. SERIAL NO.	N.D.
CONSTRUCTION	REFERENCE C.R.N. NUMBER FOR REGISTERING		
	<b>OPENINGS</b>		
A	INLET 4.0" 150# FLGD.		
B	OUTLET		
	SIDE SHELL 4.0" 150# FLGD.		
	BOTTOM SHELL		
C	VENT 1" 150# NPT 1/2 COUPLE		
D	DRAIN 2" 150# NPT 1/2 COUPLE (2 REQ'D.)		

CONSULTING ENGINEER BEL-MK ENGINEERING

**DRAWING TITLE**  
 MARA PROPERTIES,  
 VERNON, B.C.  
 MARA LAKE PROJECT  
 60" CHLORINE REACTION TANK  
 100 PSI DESIGN  
 VESSEL CONSTRUCTION

**West Coast Filters Inc.**  
 British Columbia, Canada.

DRAWN	DESIGN	CHECKED
I.D.R.	R.D.	R.D.
SCALE	DATE	APPROVED
AS NOTED	25 JULY, 2005	R.D.

CUSTOMER NO. ARLO CONSTRUCTION, VERNONBC  
 DRAWING NO. 06-07-31 105-A  
 REV.